

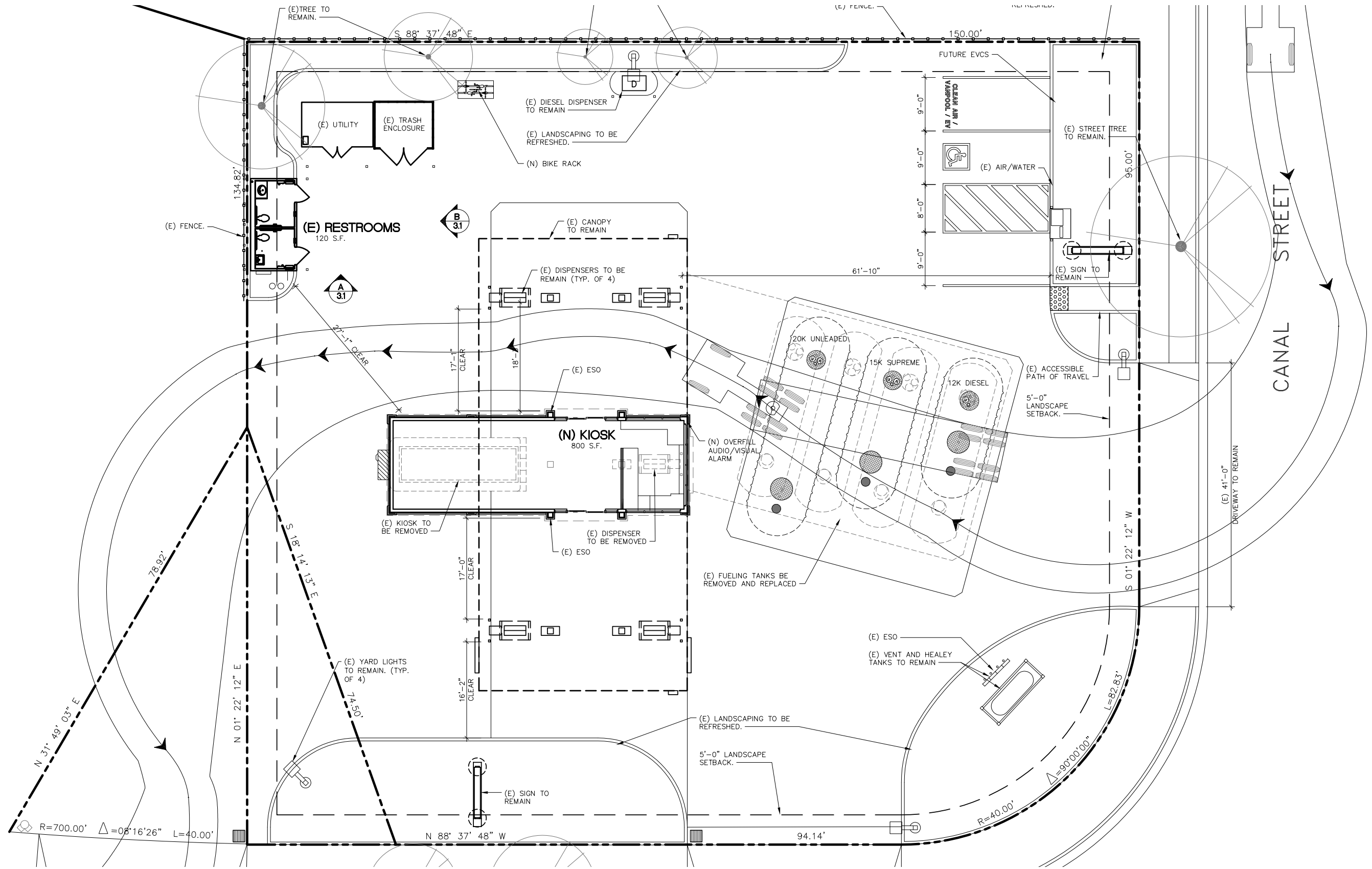


CONCEPTUAL DESIGN  
POINT RICHMOND - CHEVRON

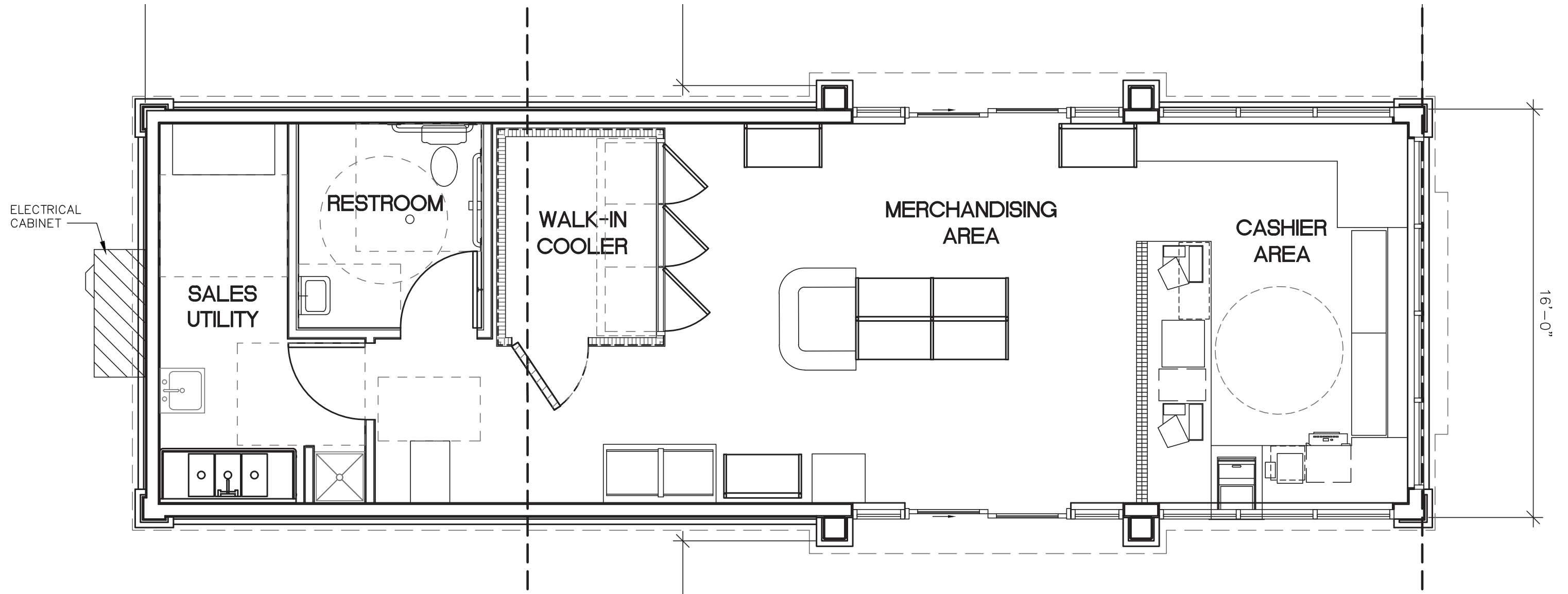
11 AUGUST 2020

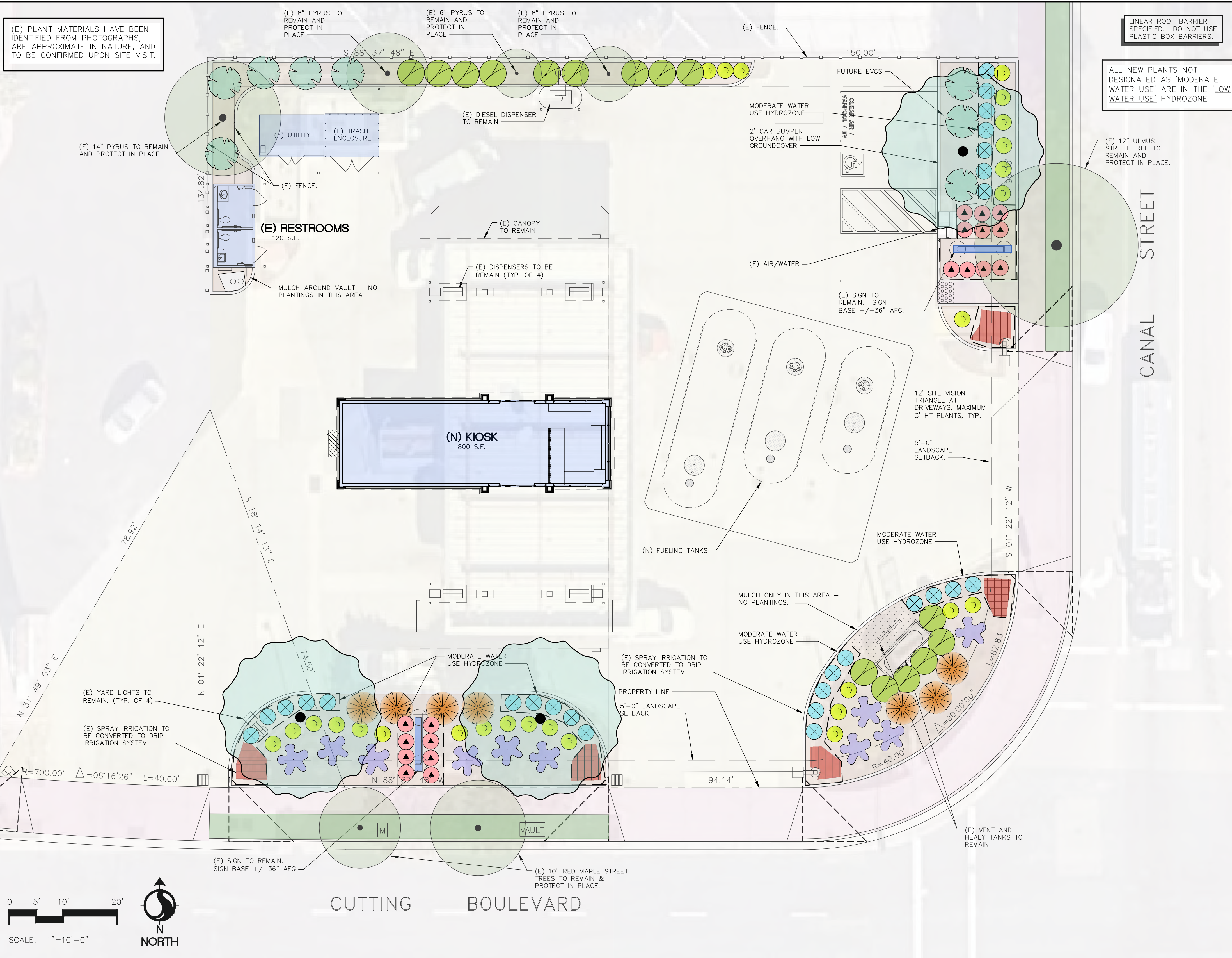


# SITE PLAN



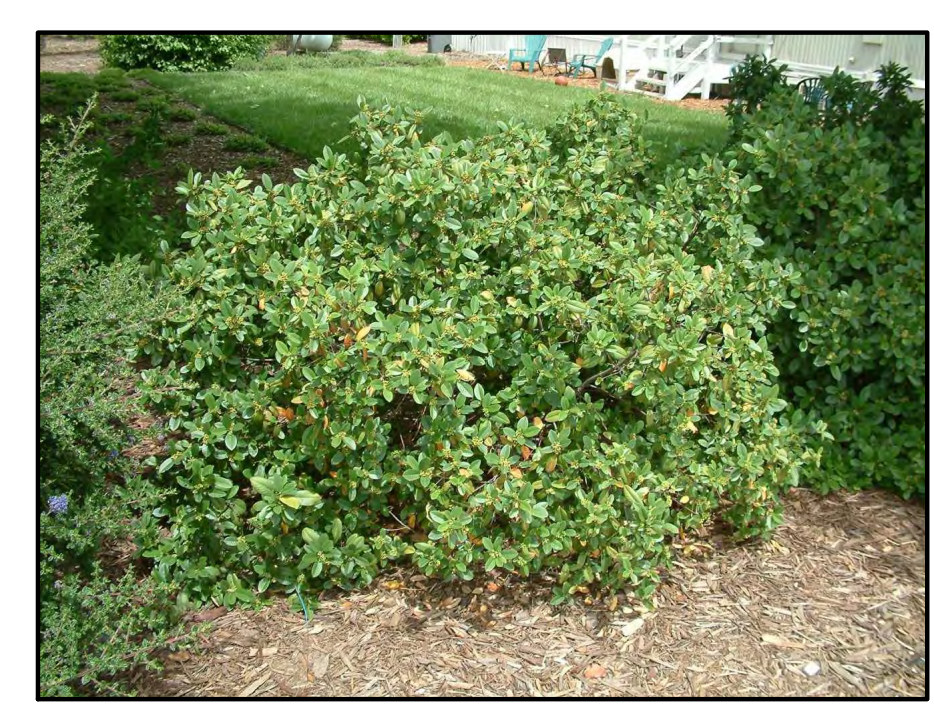
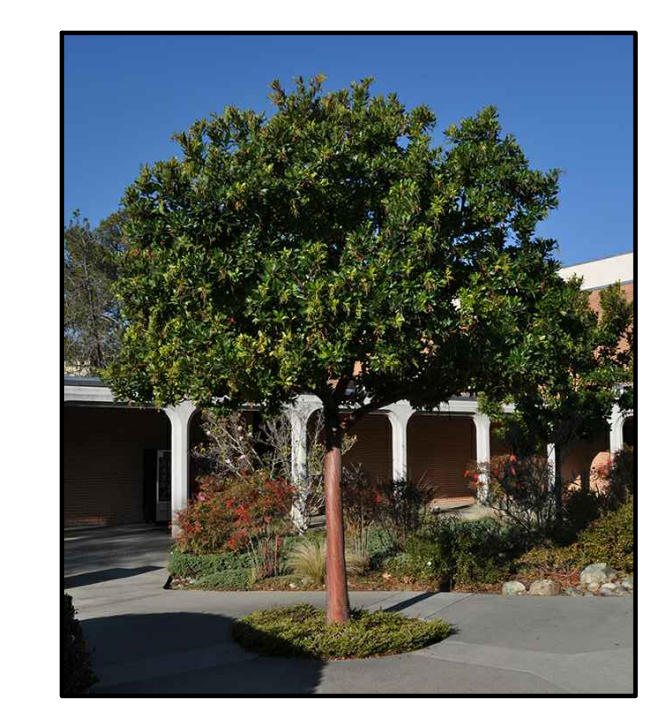
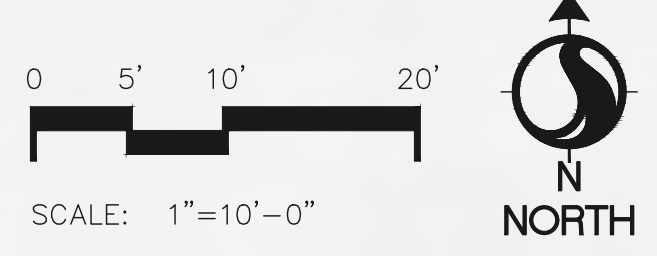
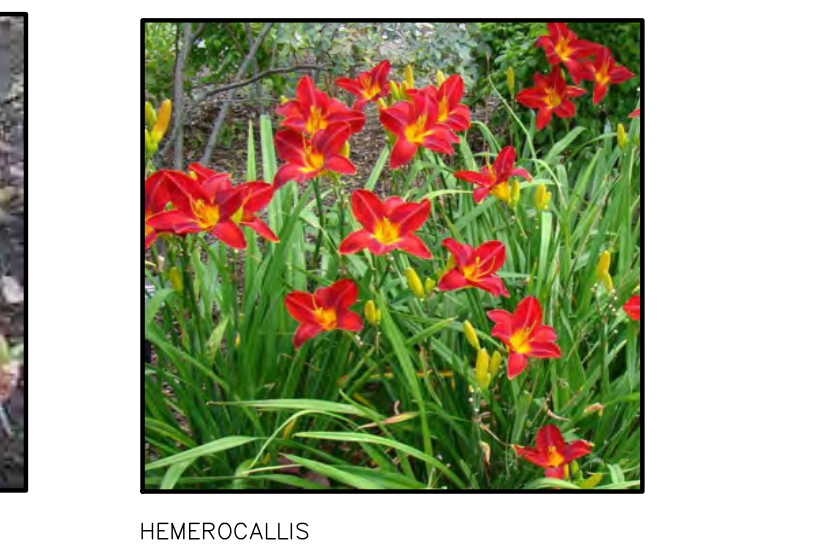
# PLAN





### PLANTING LEGEND

SYMBOL	SIZE	QTY.	MATURE HEIGHT	BOTANICAL NAME	WUCOLS * WATER RATING	COMMON NAME
<b>TREES</b>						
(Symbol)	15 GAL.	3	30'	ARBUTUS 'MARINA', STANDARD * * * (ON CITY'S APPROVED STREET TREE LIST)	L	STRAWBERRY TREE
<b>SHRUBS AND PERENNIALS</b>						
(Symbol)	5 GAL.	28	3'	HEBE SPECIOSA 'VARIEGATA'	M	HEBE
(Symbol)	5 GAL.	26	30"	PITTOSPORUM TOBIRA 'WHEELERS DWARF'	L	DWARF MOCK ORANGE
(Symbol)	5 GAL.	15	4'	RHAMNUS CALIFORNICA * * 'EVE CASE'	L	DWARF COFFEEBERRY
(Symbol)	5 GAL.	7	3'	PHORNIUM 'APRICOT QUEEN'	L	NEW ZEALAND FLAX
(Symbol)	1 GAL.	18	3'	CROPROSMA REPENS 'FIRE BURST'	M	MIRROR PLANT
(Symbol)	1 GAL.	10	12"	CEANOTHUS 'CENTENNIAL' * *	L	CALIFORNIA LILAC
(Symbol)	1 GAL.	8	12"	ARCTOSTAPHYLOS 'EMERALD CARPET' * *	L	EMERALD CARPET MANZANITA
<b>GROUNDCOVERS / MASS PLANTINGS</b>						
(Symbol)	1 GAL. 18" OC	54 S.F.	24"	HEMEROCALLIS HYBRIDS, EVERGREEN, DWARF, RED	M	RED DAYLILY
<b>SITE FEATURES - TYPICAL</b>						
(Symbol)	NOT SHOWN	ROOT BARRIER: INSTALL AT TREES (EXCEPT PALMS) PLANTED 5' OR LESS FROM CURBS, BUILDINGS, OR PAVEMENT. USE COPPER MESH 16.011 COPPER AVAILABLE FROM HOWARD WIRE CLOTH COMPANY, HAYWARD CA (510)887-8787, OR 24" LINEAR PLASTIC PANEL FROM DEEP ROOT OR EQUAL				



MARK	DATE	REVISIONS/ MILESTONES	INITIAL	MARK	DATE	REVISIONS/ MILESTONES	INITIAL
	04/17/20	RE-ISSUED FOR PRNC LUDRC	RJP				
	02/24/20	ISSUED FOR PLANNING REVIEW	RJP				
	02/14/20	RE-ISSUED FOR PRNC LUDRC	RJP				
	01/07/20	ISSUED FOR NEIGHBORHOOD REV.	RJP				

901 W. CUTTING BLVD.  
RICHMOND, CA

**Chevron**

**Stantec** Stantec Architecture Inc.  
1383 N. McDOWELL BLVD.  
PETALUMA, CA 94954  
Tel. 707.765.1660 Fax. 707.765.9908  
www.stantec.com

DO NOT USE FOR CONSTRUCTION UNLESS INITIALED AND DATED:

SS# 90103  
JOB# 2014739006  
DRAWING CREATED:

MGR: vk  
DATE: / /

SHEET  
**2.1**

# MOODBOARD



# RENDERING

