

RICHMOND FERRY TO BRIDGE TO GREENWAY COMPLETE STREETS PLAN

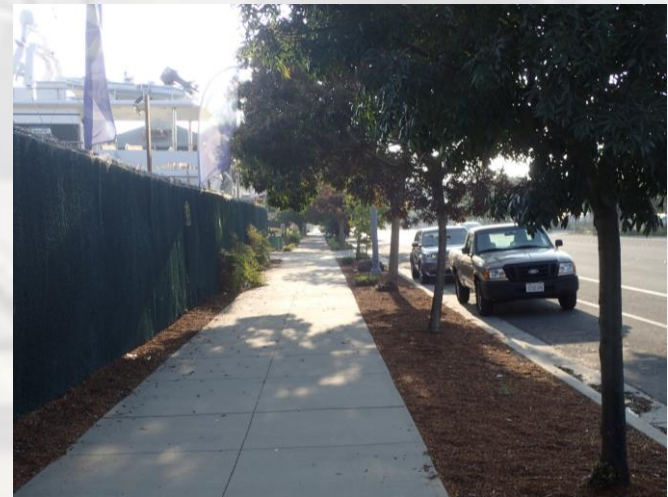


Point Richmond Neighborhood Council
July 31, 2019



PURPOSE OF THE PLAN

- Provide valuable local and regional connections for people walking and bicycling to the new Richmond Ferry Terminal, the upcoming Richmond-San Rafael Bridge multi-use path, and the Richmond Greenway.



PLAN AREA

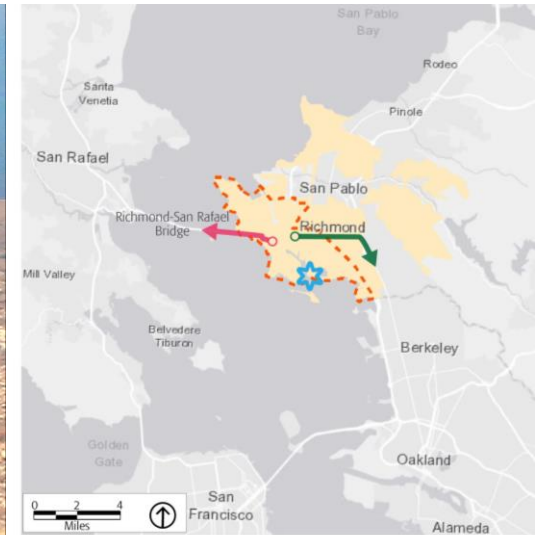


Figure 1. Regional Location

- City of Richmond
- Study Area Census Tracts
- Richmond Ferry Terminal
- San Francisco Bay Trail to Bridge Path
- Richmond Greenway and Ohlone Greenway

RICHMOND FERRY TO BRIDGE TO GREENWAY

PROJECT SCHEDULE

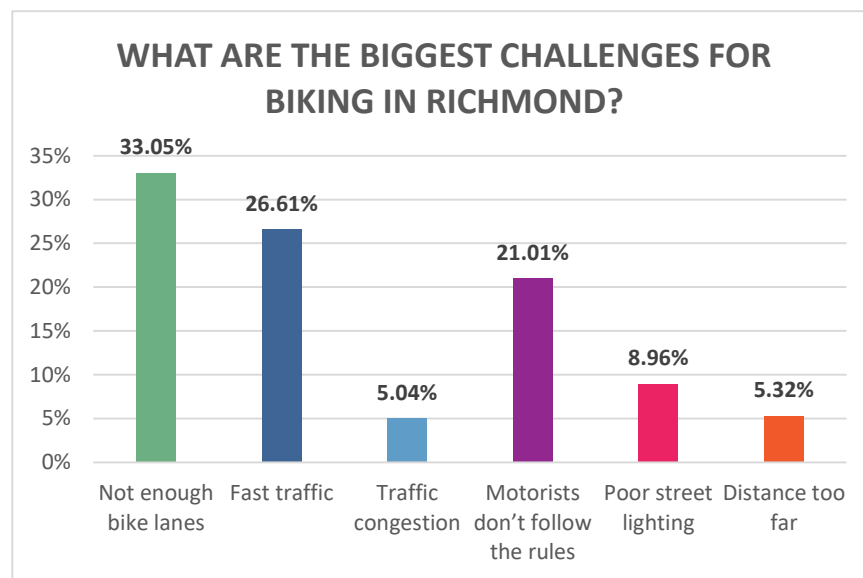
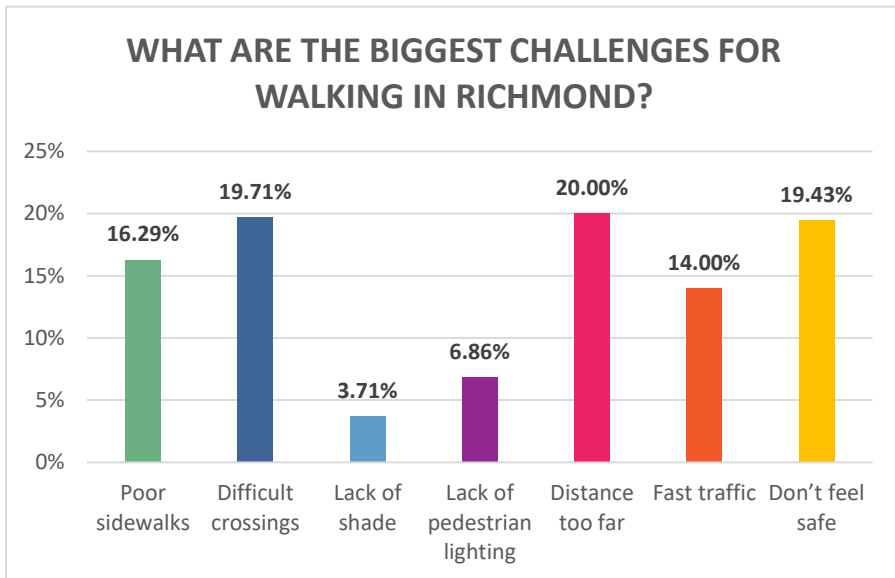
	December 2018	Project Launch
2019	April-May	Existing Conditions Analysis
	June-August	Community Input to Inform Concepts
	Aug-Sept	Corridor Concept Alternatives
	Sept-Oct	Community Input on Concepts
2020	Nov-May	Develop Refined Concept
	June	Final Plan Adoption

WHAT HAS BEEN EVALUATED?

- Existing Transportation, Land Use and Development
- Demographics
- Collisions involving people walking and bicycling
- Infrastructure Analysis
 - West Cutting Boulevard
 - Garrard Boulevard
 - Point Richmond
- Issues and Opportunities

COMMUNITY INPUT SO FAR

Sample Survey Questions and Responses to Date:



- Top 3 barriers to walking:

- Distances too far
- Difficult crossings
- Don't feel safe

- Top 3 barriers to biking:

- Not enough bike lanes
- Fast traffic
- Motorists don't follow the rules

WHAT ARE COMPLETE STREETS?

ENHANCED BICYCLE AMENITIES



Colored Bicycle Lane Markings



Cutting Boulevard (Richmond) Conceptual Rendering



Bike Signal



Richmond Greenway



Bike Racks

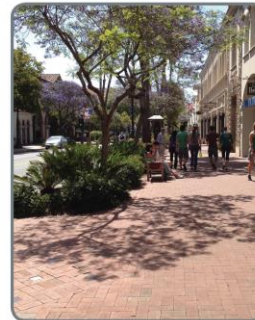
ENHANCED PEDESTRIAN AMENITIES



Flashing Beacons and High-Visibility Crosswalk



Landscaping and Seating



Attractive Sidewalks



Corner Bulbout



Pedestrian Lighting

POINT RICHMOND CONNECTIONS



RICHMOND FERRY TO BRIDGE TO GREENWAY

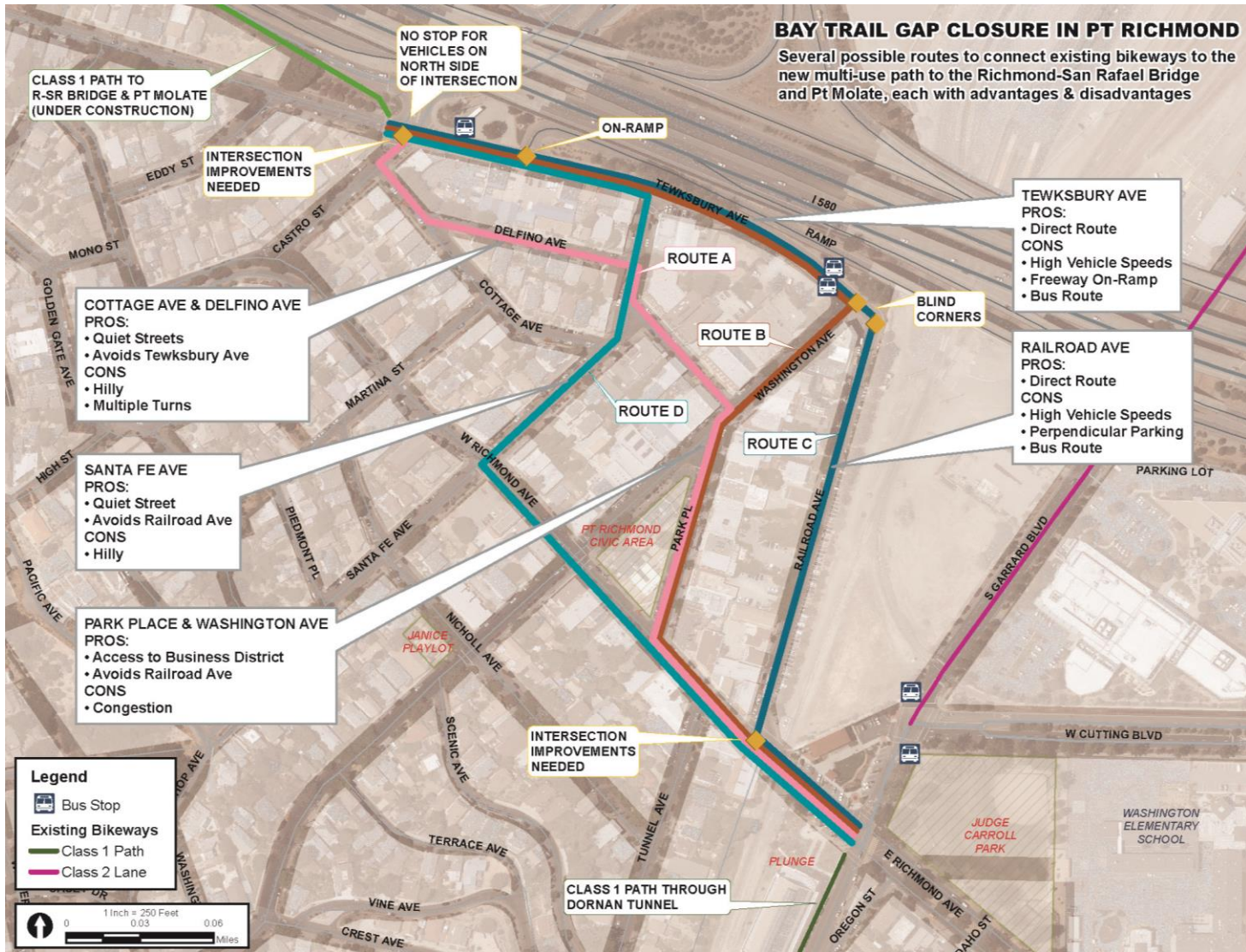
CONSIDERATIONS

Point Richmond



- Some roadways and intersections have low lighting levels
- Limited sight distance at some intersections
- Narrow streets and vehicular parking
- Interim bicycle facilities in place

POINT RICHMOND CONNECTIONS



Source: NCE Engineering

RICHMOND FERRY TO BRIDGE TO GREENWAY

CONSIDERATIONS

Cutting Boulevard



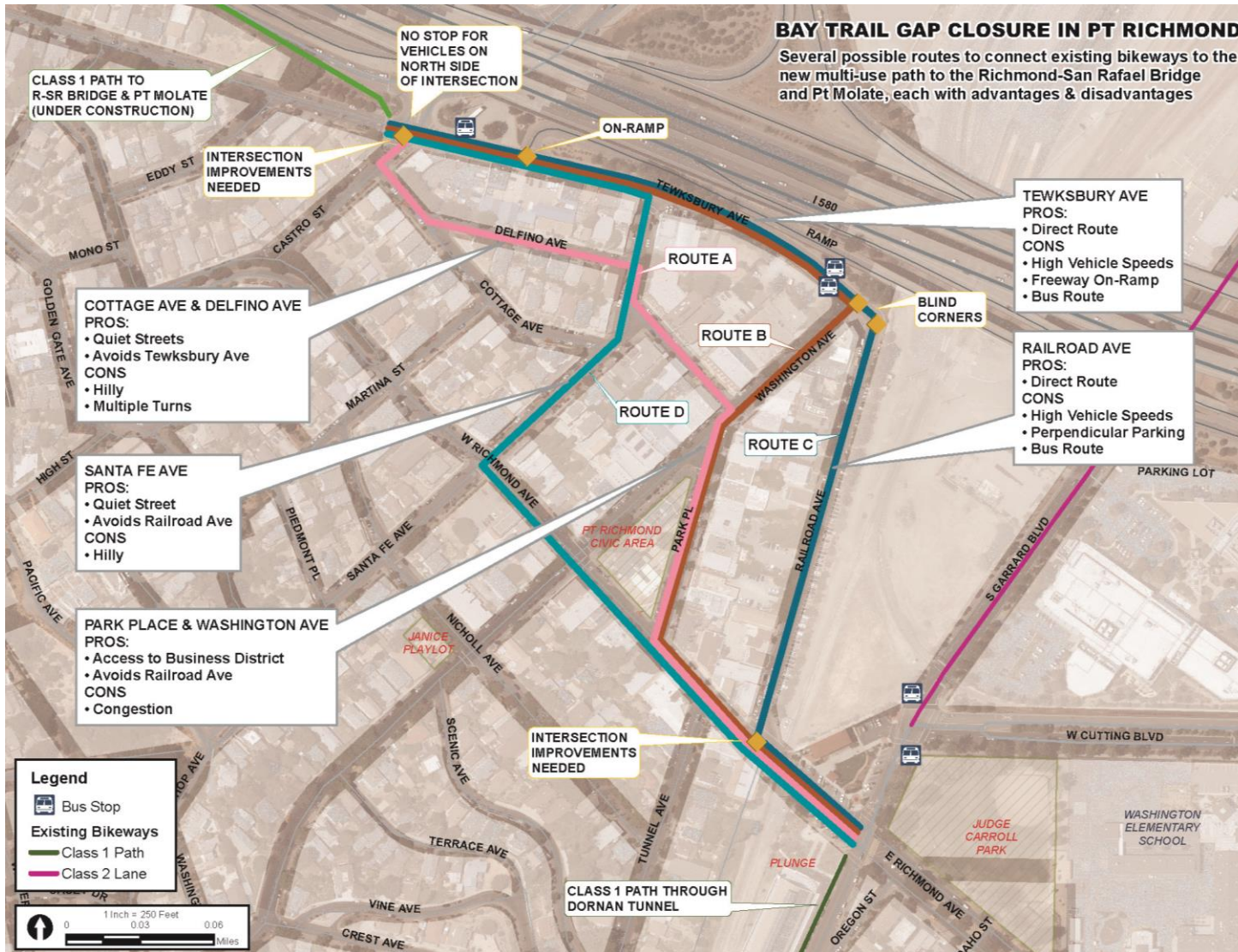
- High truck traffic volumes
- Acute-angle railroad crossings at 4th Street and Wine Street
- Existing Class II Bike Lanes
- Sidewalk gaps on south side and long segment without pedestrian crossings
- Potential for enhanced bicycle and pedestrian facilities

POINT RICHMOND CONNECTIONS - DISCUSSION



RICHMOND FERRY TO BRIDGE TO GREENWAY

POINT RICHMOND CONNECTIONS - DISCUSSION



RICHMOND FERRY TO BRIDGE TO GREENWAY

PROVIDE YOUR INPUT!

Project Website (includes Online Survey):

www.ferry2bridge2greenway.com

Cell Phone Text Survey:

Take a short survey!
Text "active" to
(510) 900-5861

Envíe "active" al
(510) 900-5861 para
tomar la encuesta